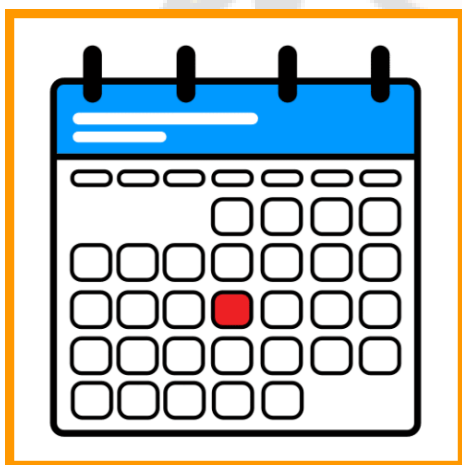
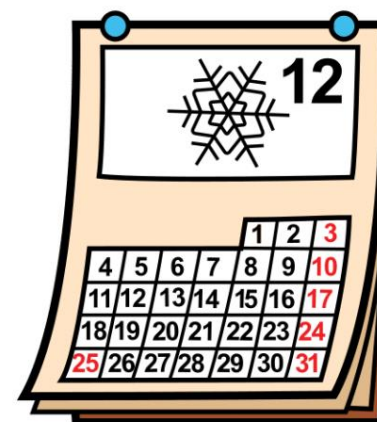


# DIA DE LA DISCAPACIDAD



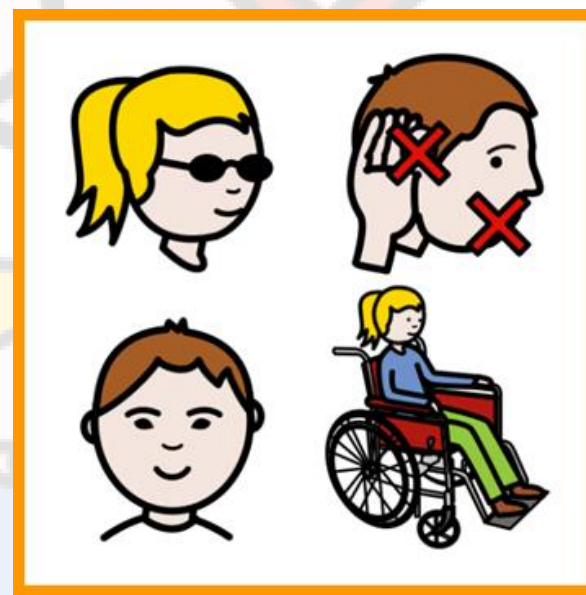


3



EL DÍA DE 3 DICIEMBRE





# SE CELEBRA EL DÍA DE LA DISCAPACIDAD

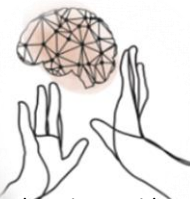


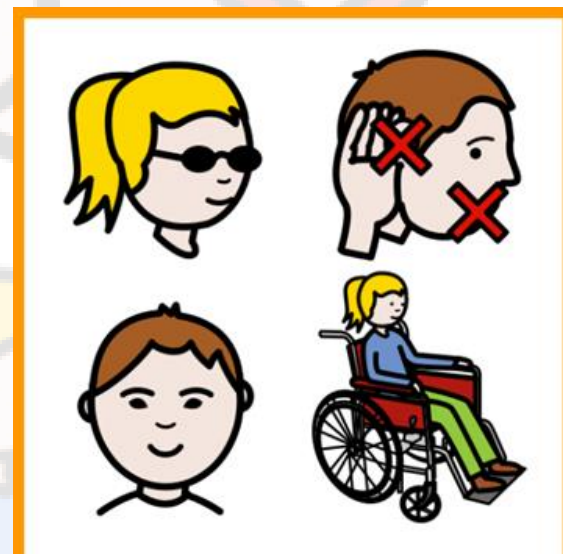
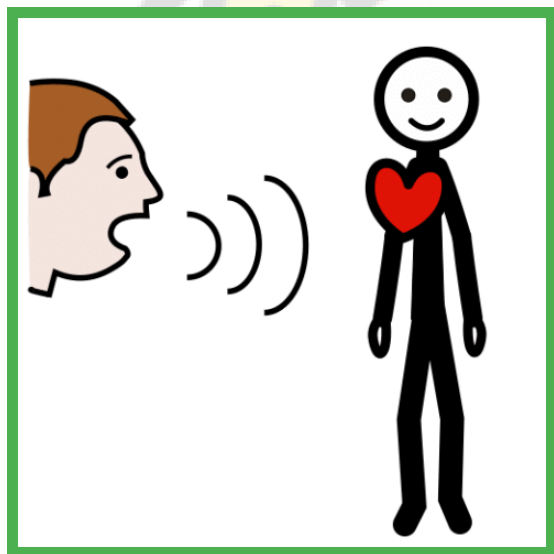


# 1992



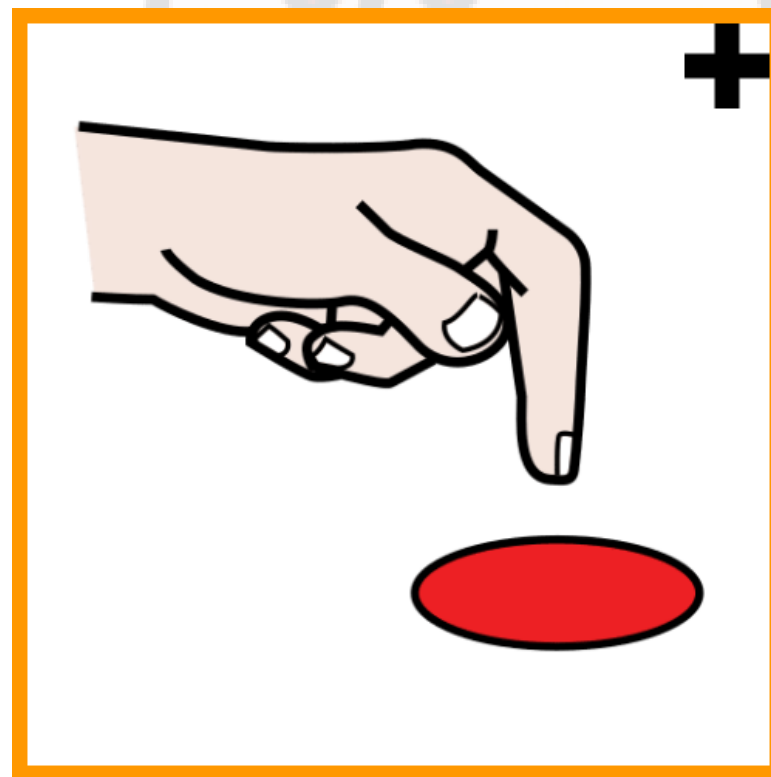
## FUE DECLARADO EN 1992 POR LAS NACIONES UNIDAS





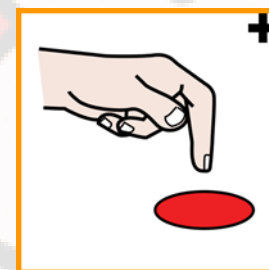
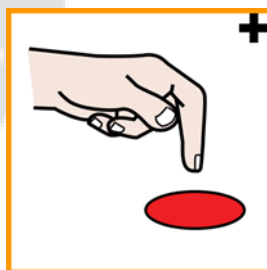
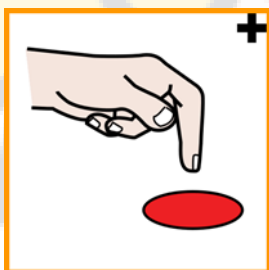
**PARA SENSIBILIZAR SOBRE LOS DERECHOS DE LAS PERSONAS CON DISCAPACIDAD**





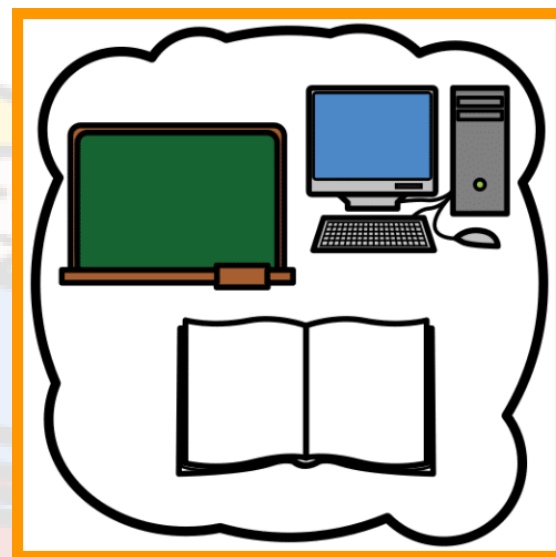
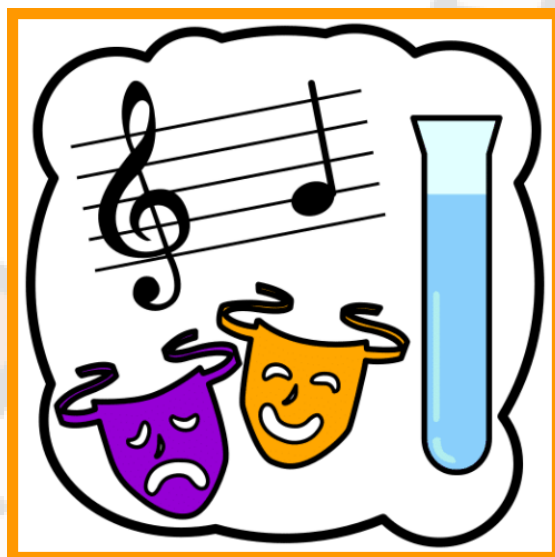
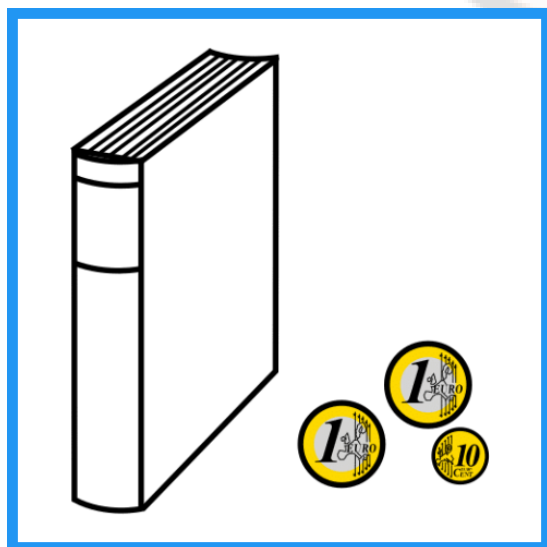
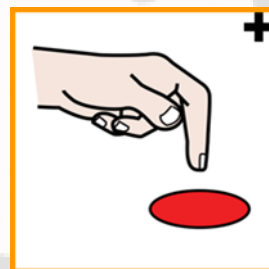
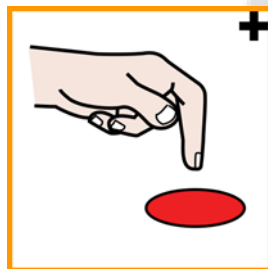
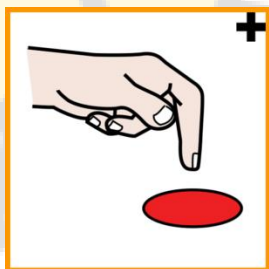
**Y CONOCER SOBRE SUS NECESIDADES...**





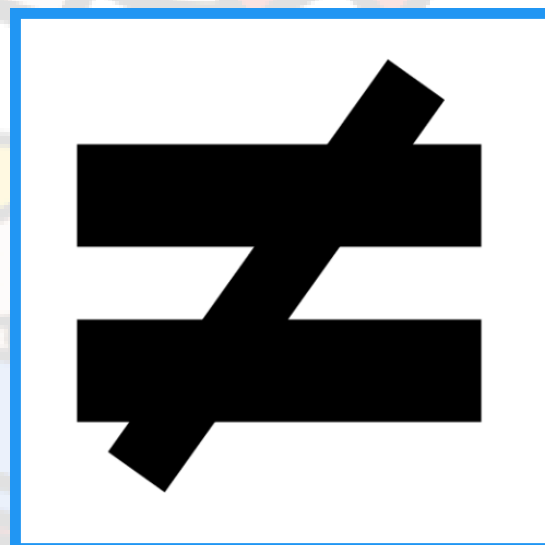
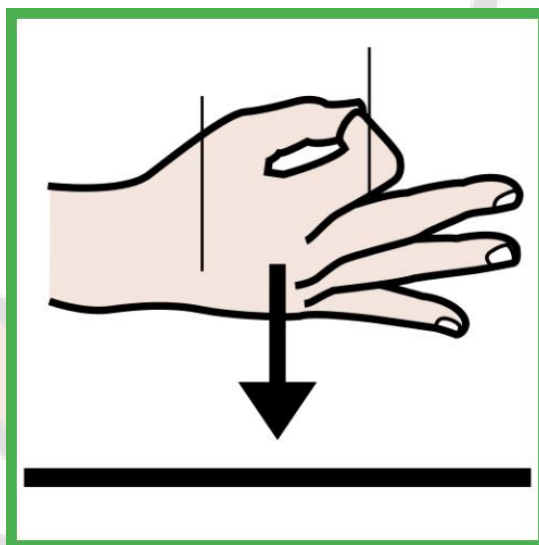
**SOCIALES, POLÍTICAS, LABORALES...**





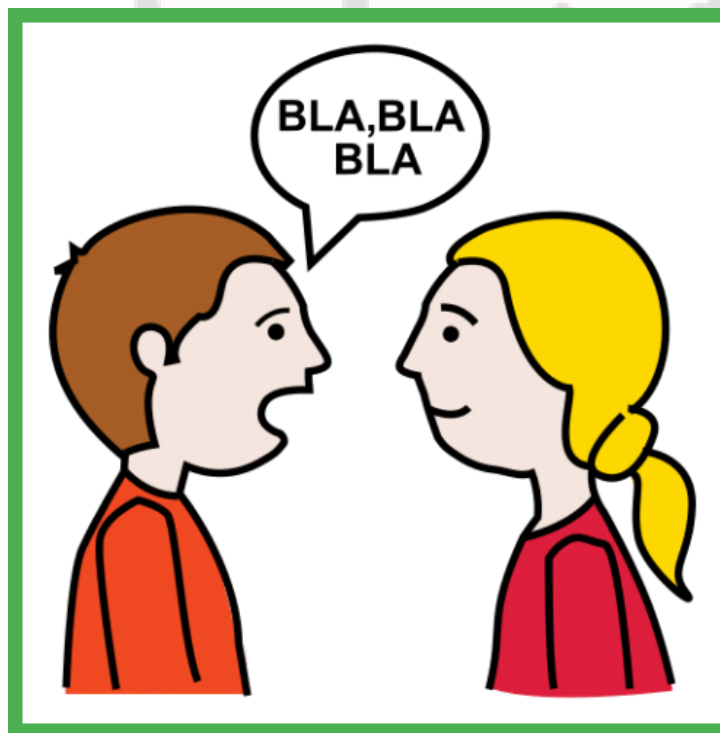
## ECONÓMICAS, CULTURALES Y EDUCATIVAS





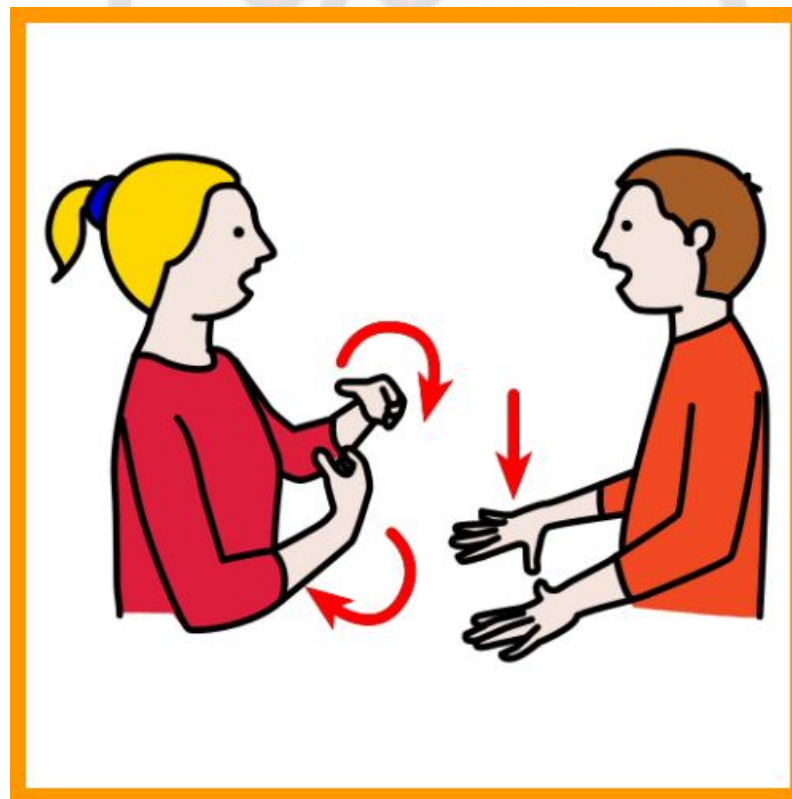
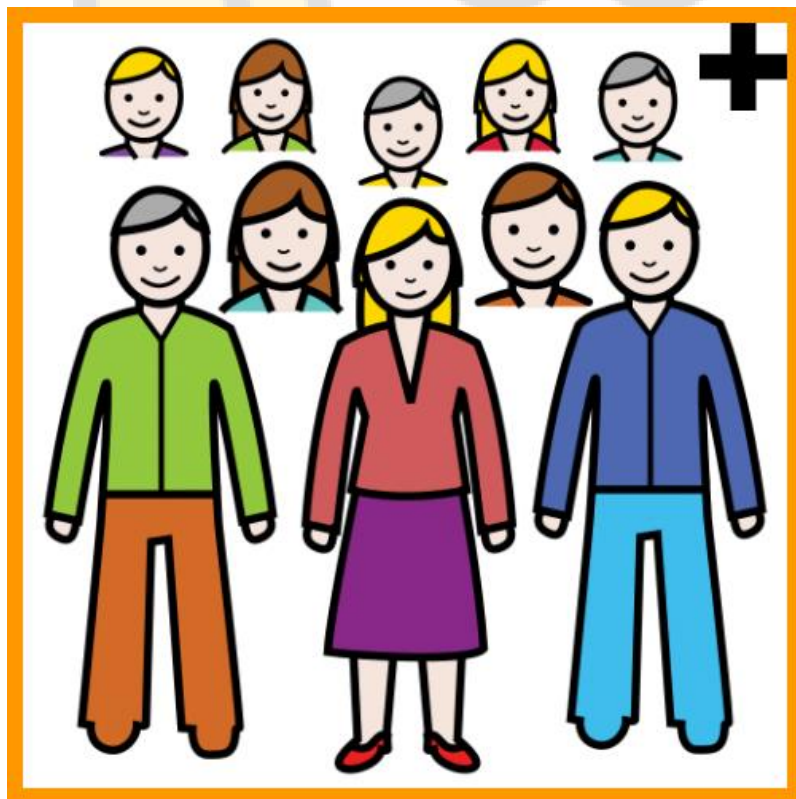
**CADA PERSONA ES DIFERENTE**





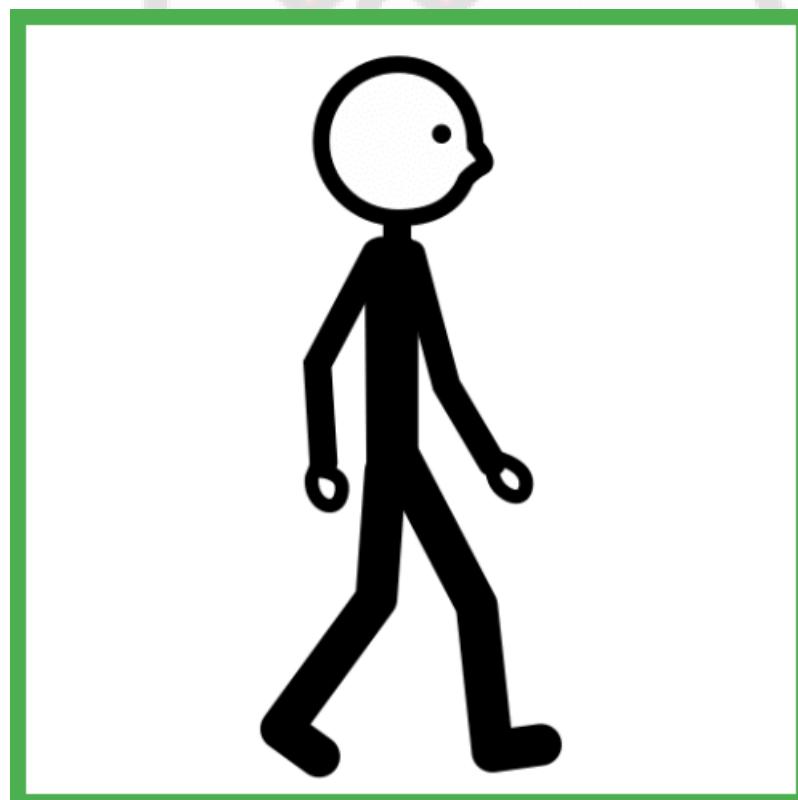
**HAY PERSONAS QUE SE COMUNICAN CON LENGUAJE ORAL**





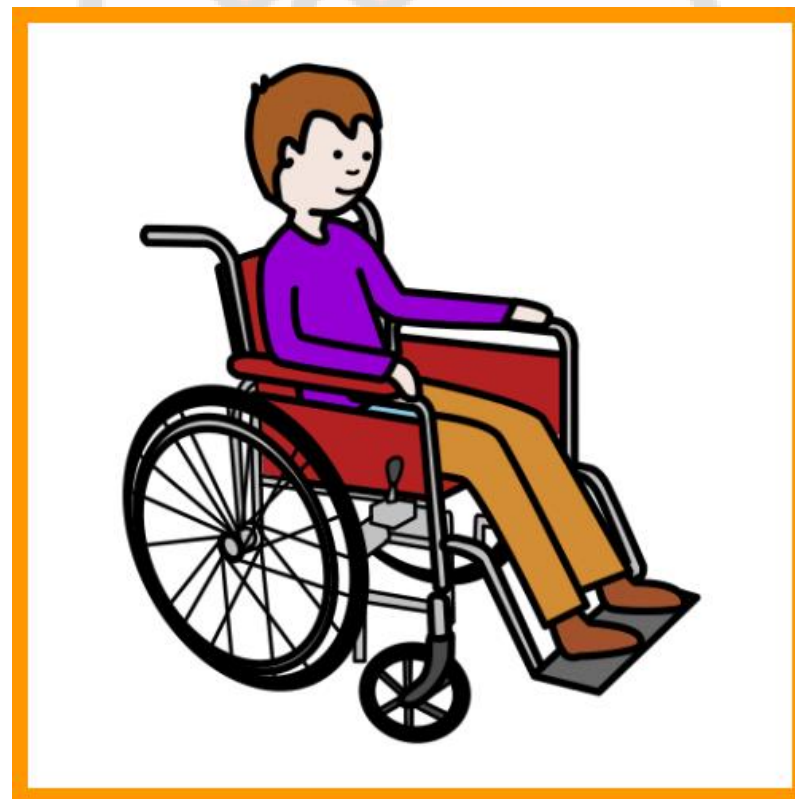
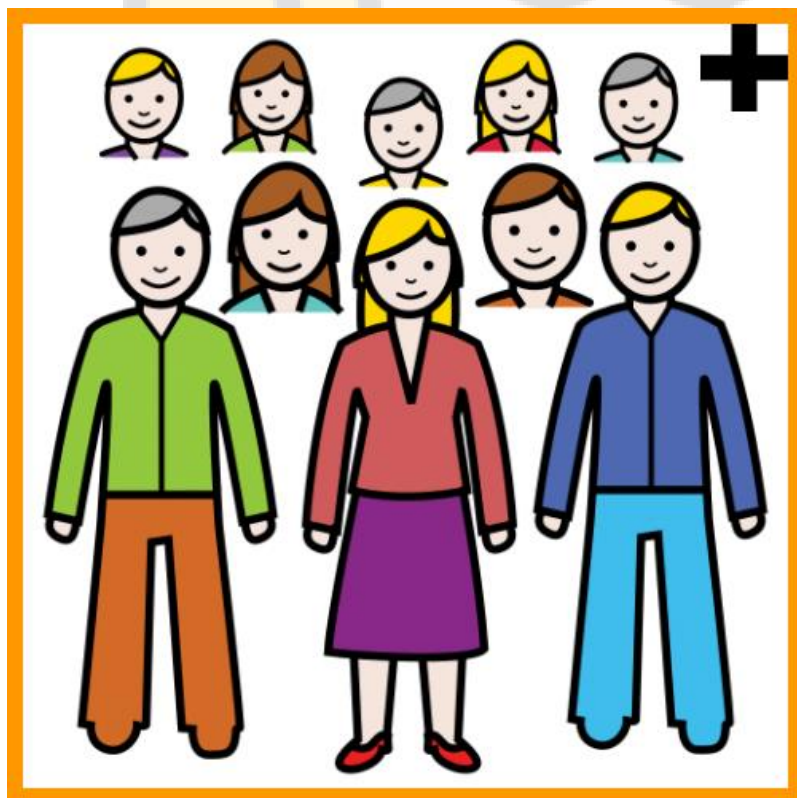
## OTRAS PERSONAS EN LENGUA DE SIGNOS





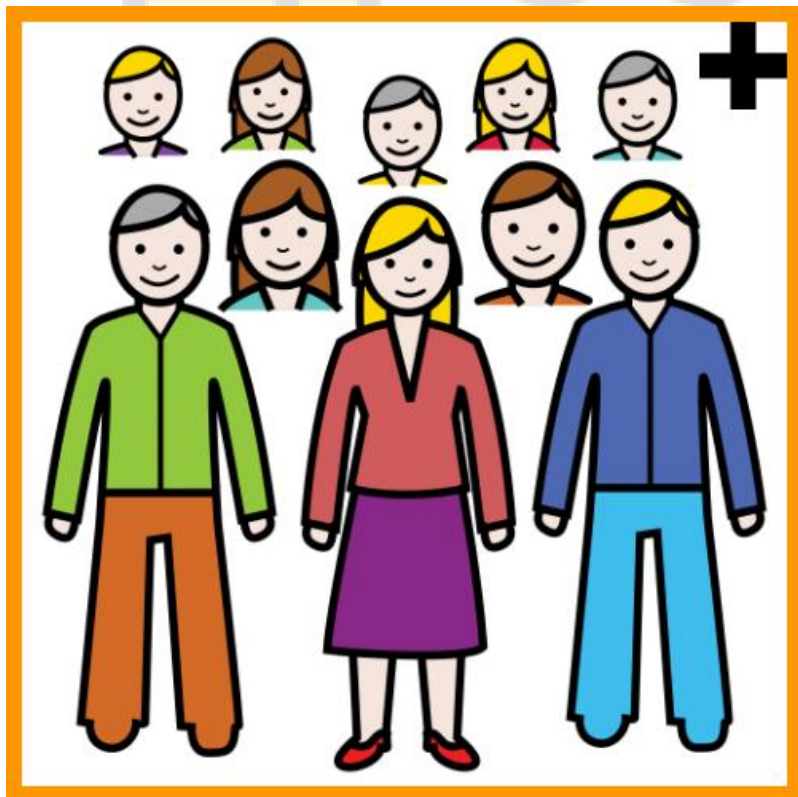
**HAY PERSONAS QUE SE DESPLAZAN ANDANDO**





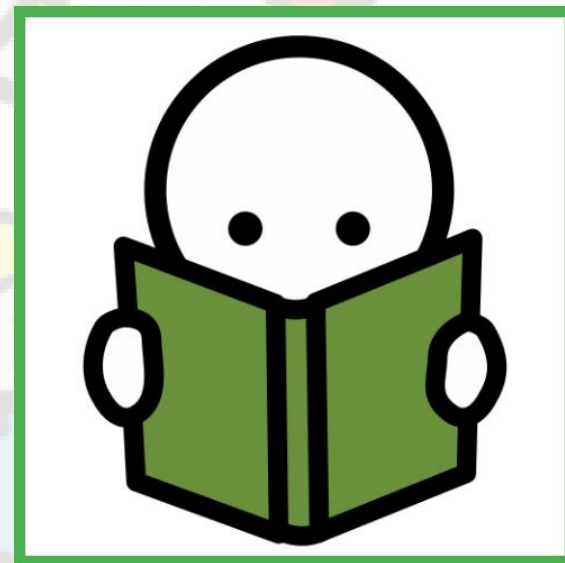
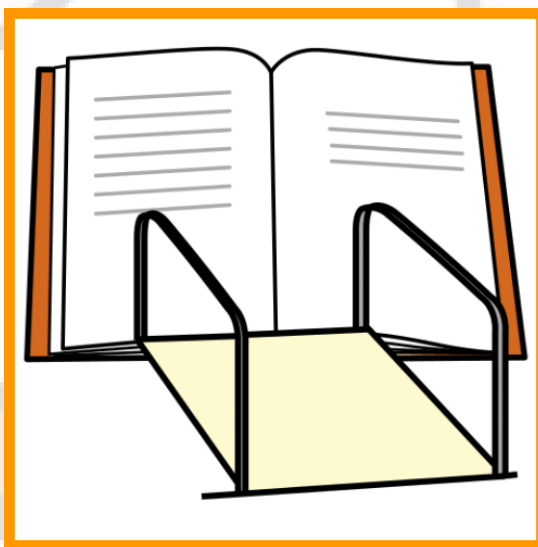
## OTRAS EN SILLAS DE RUEDAS





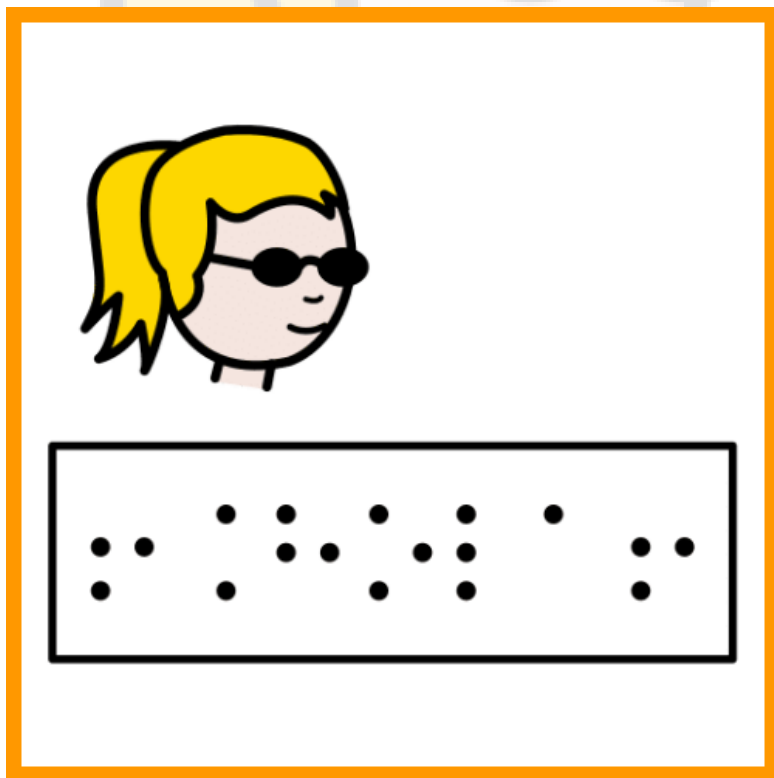
**OTRAS NECESITAN UN PERRO GUÍA**





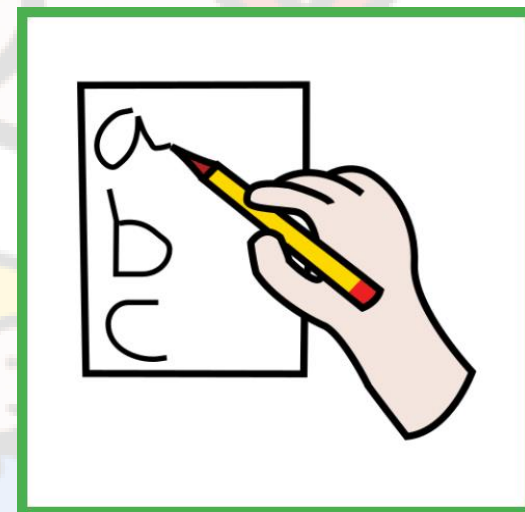
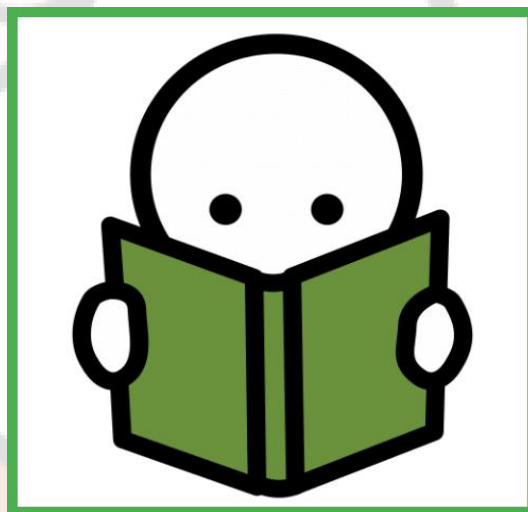
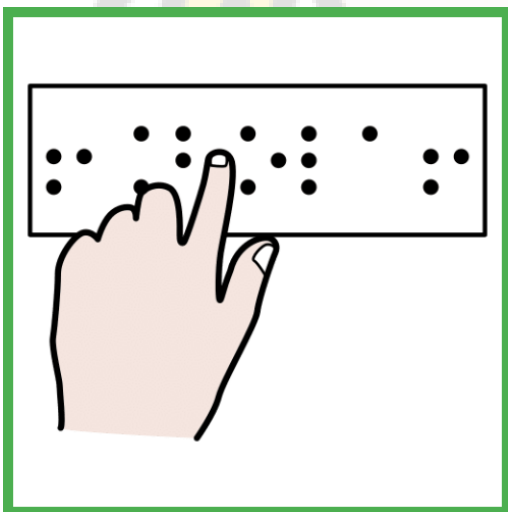
**HAY QUIEN NECESITA ADAPTACIONES PARA LEER**





**SE LLAMA BRAILLE Y LO EMPLEAN PERSONAS CON DISCAPACIDAD VISUAL**





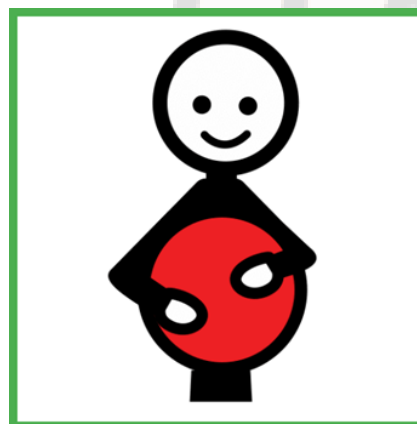
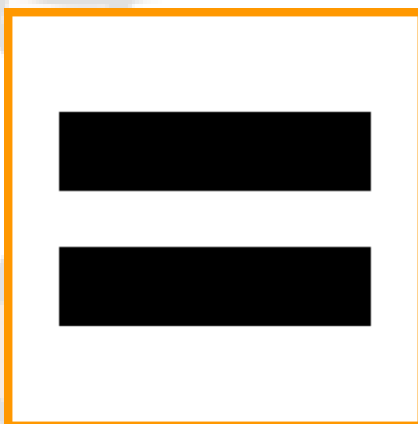
**BRAILLE ES UN SISTEMA DE SIGNOS PARA LEER Y ESCRIBIR**





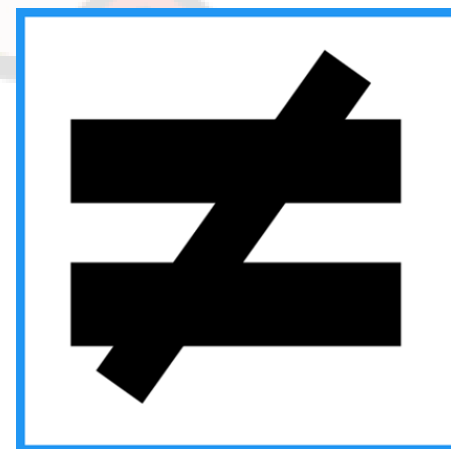
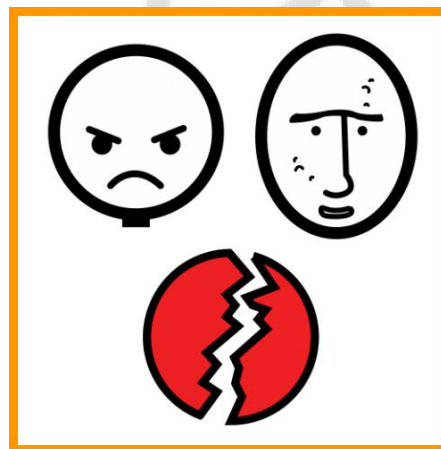
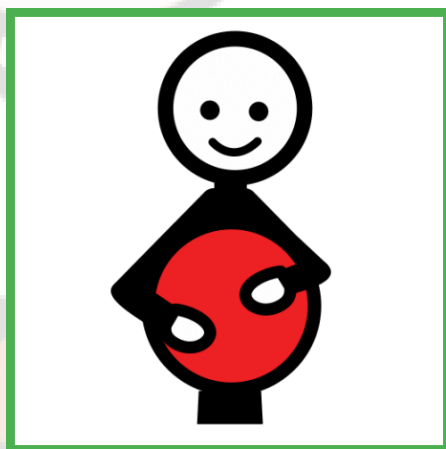
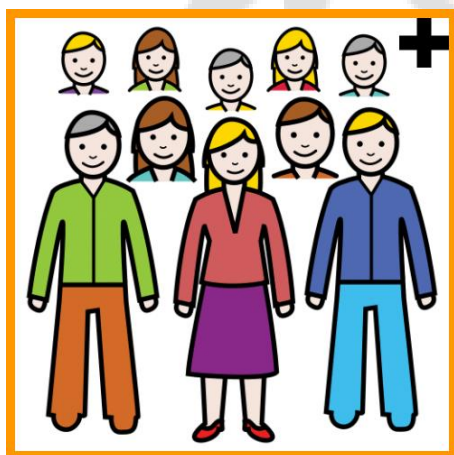
**¡QUÉ INTERESANTE!**





**SOMOS IGUALES PORQUE TENEMOS LOS MISMOS DERECHOS**





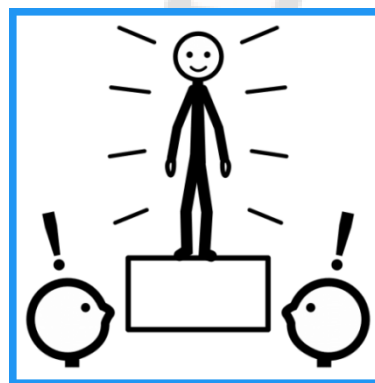
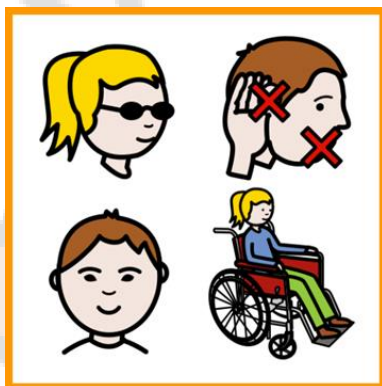
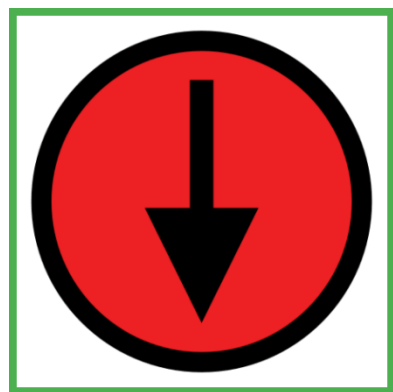
**A PESAR DE TENER CUALIDADES DIFERENTES**



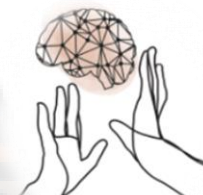


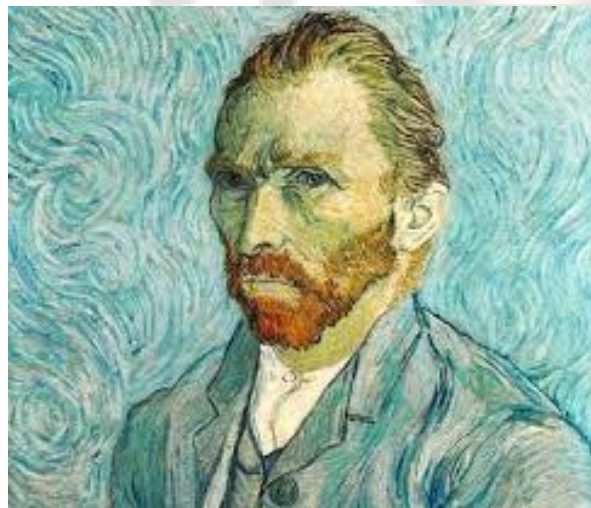
¿SABÍAS QUÉ...?





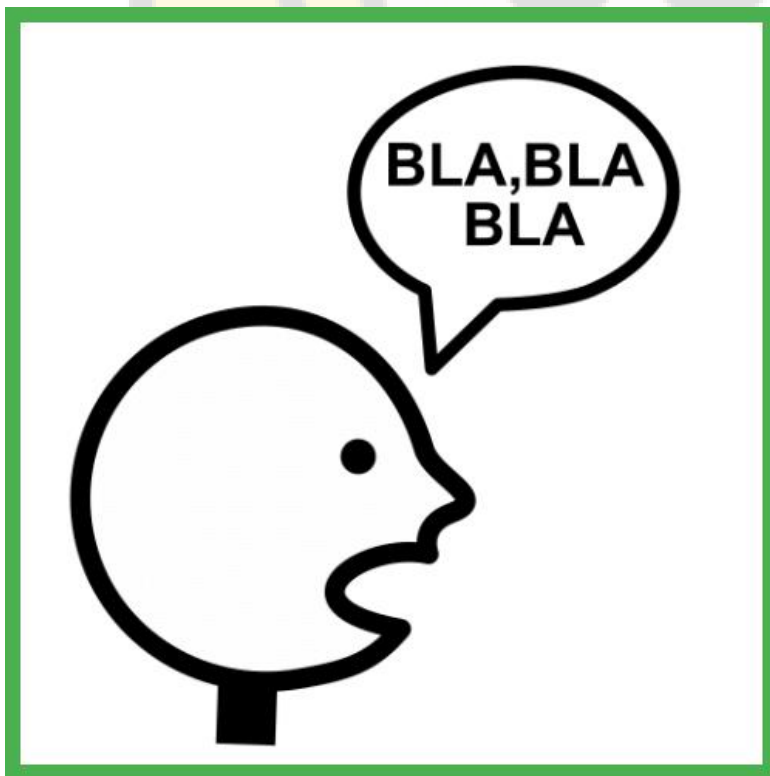
HAY PERSONAS CON DISCAPACIDAD QUE HAN SIDO GRANDES MÚSICOS O PINTORES...





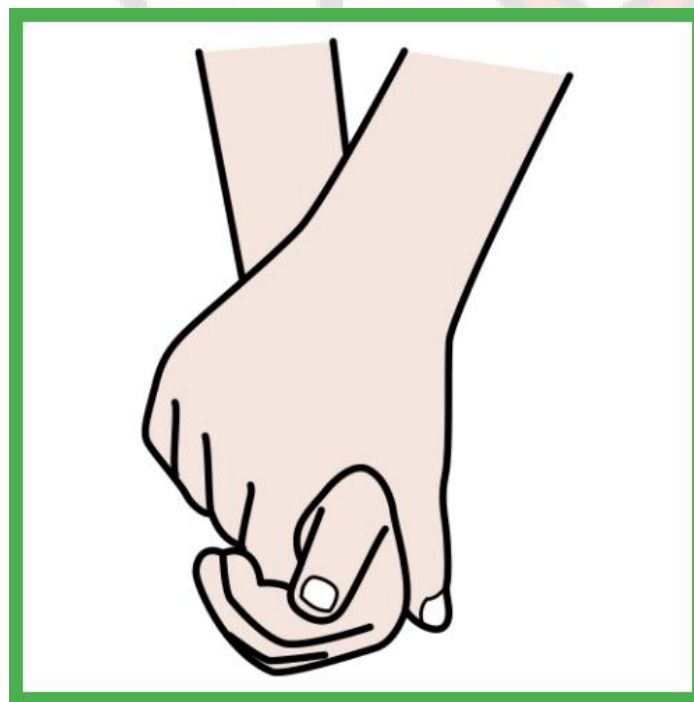
VAN GOGH, FRIDA KAHLO, BEETHOVEN...





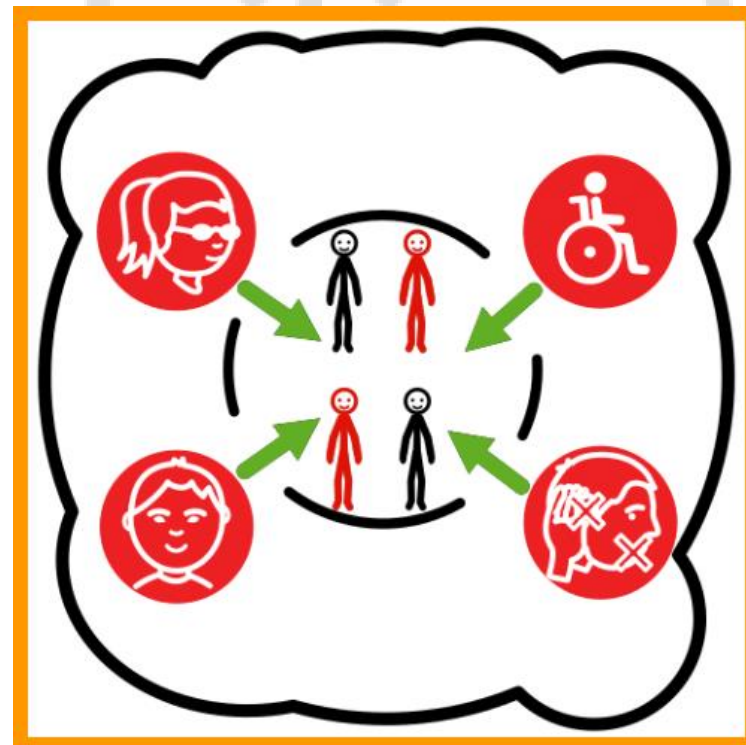
# DI... ¡CAPACIDAD!





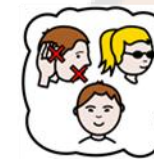
# JUNTOS...





# POR UN MUNDO INCLUSIVO





M<sup>a</sup> JESÚS FERNÁNDEZ GUILLÉN  
(MAESTRA DE PT)



Instagram: a\_traves\_de\_mis\_sentidos.



Canal Youtube: M<sup>a</sup> Jesús Fernández.

Partiendo del artículo 32 del TRLPI, en su apartado 2 :

*"Este material se utilizará exclusivamente con una finalidad educativa".*

**Autor pictogramas:** Sergio Palao    **Procedencia:** ARASAAC (<http://arasaac.org>)    **Licencia:** CC (BY-NC-SA)    **Autora:** M<sup>a</sup> Jesús Fernández Guillén  
**.Instagram:** @a\_traves\_de\_mis\_sentidos